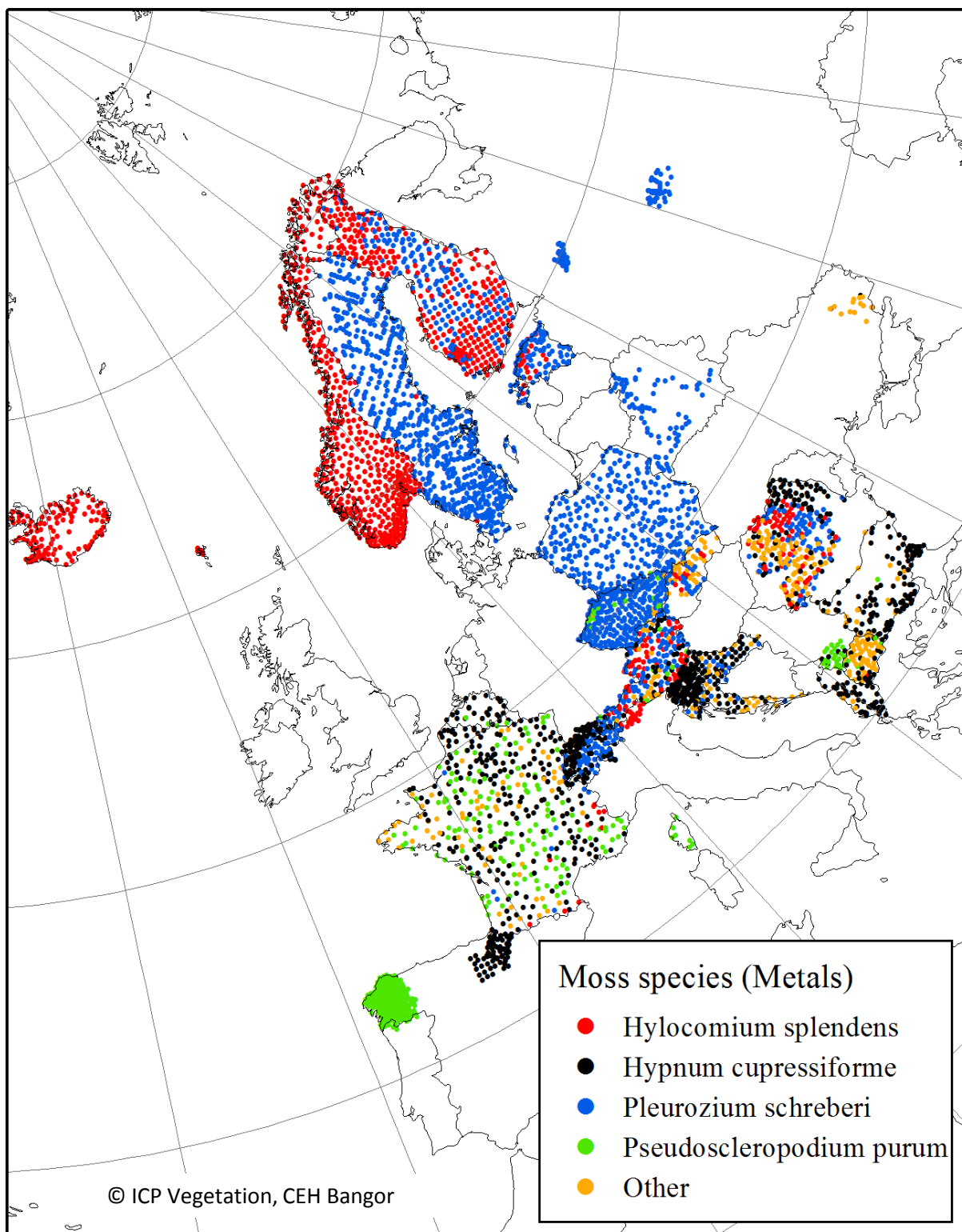
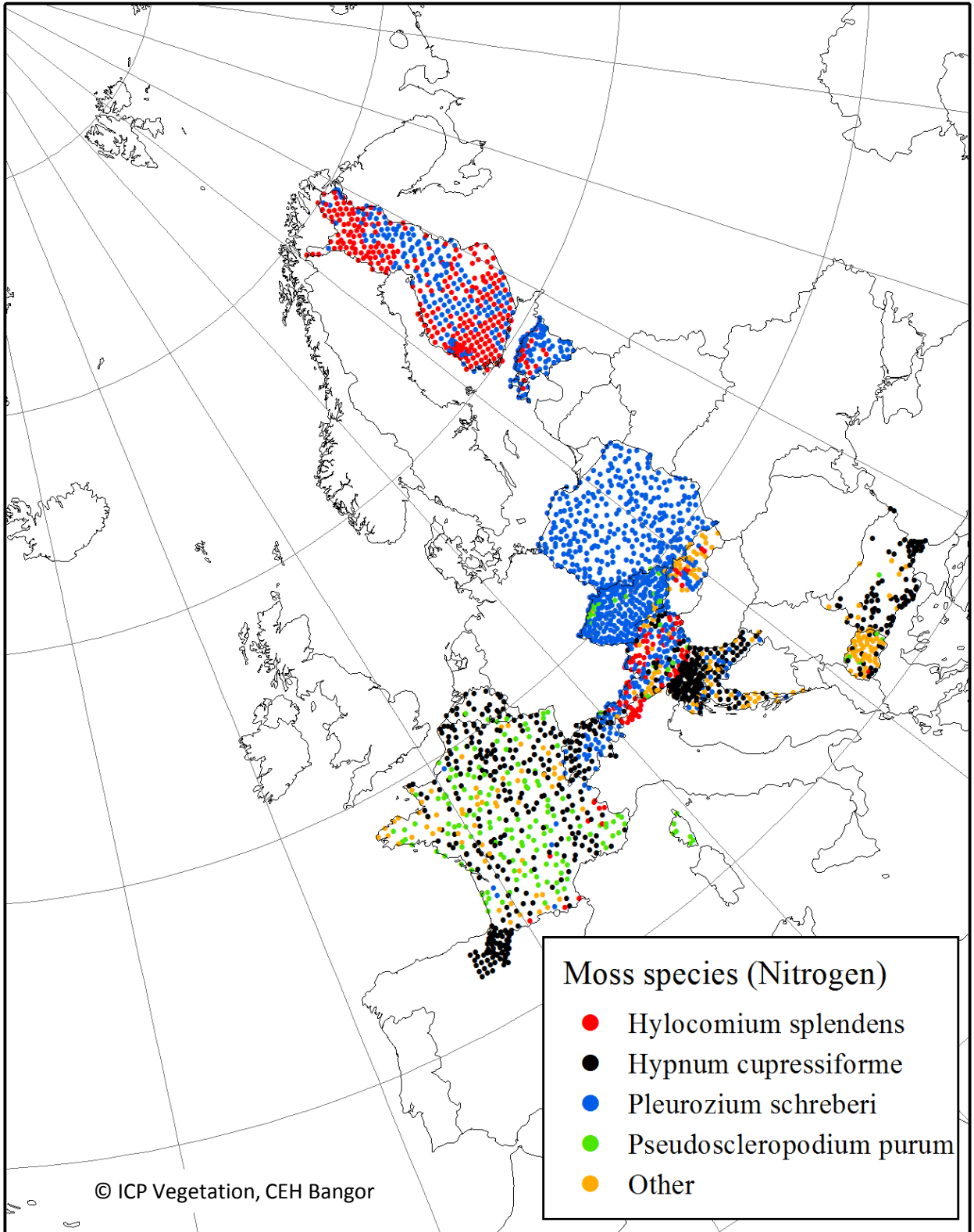


# Heavy metals in mosses survey results, 2010

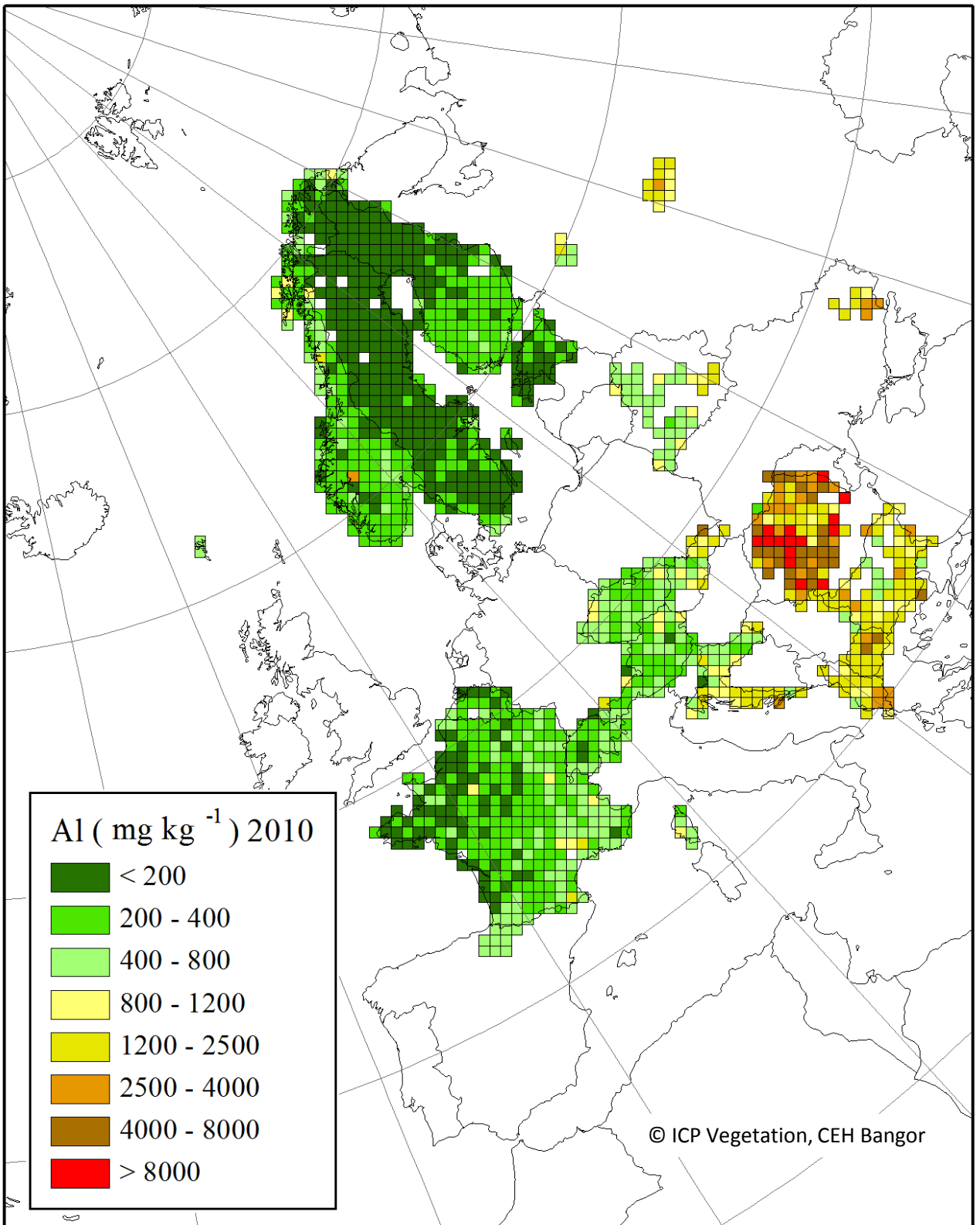
## Heavy metal 2010 sampling sites



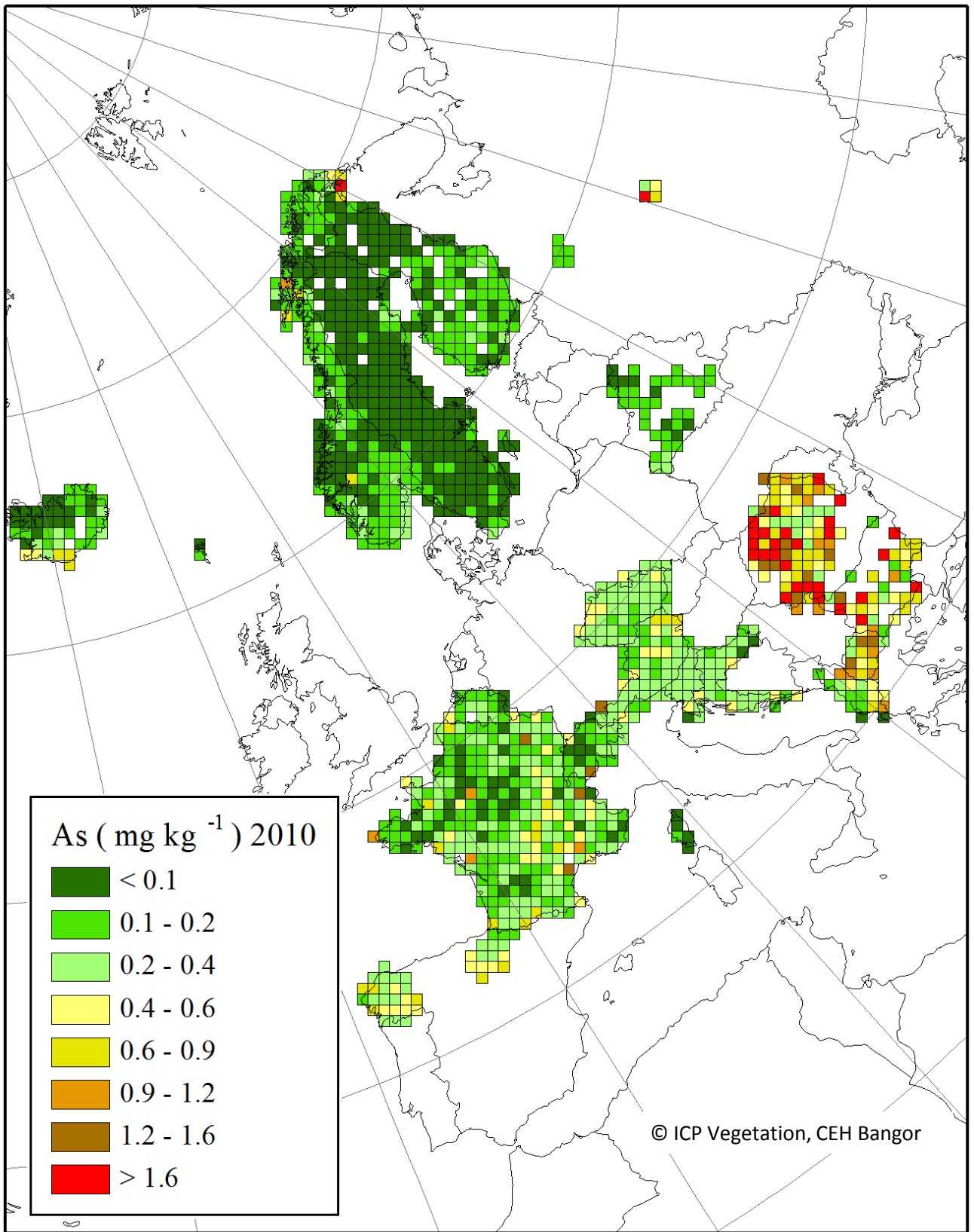
# Nitrogen 2010 sampling sites



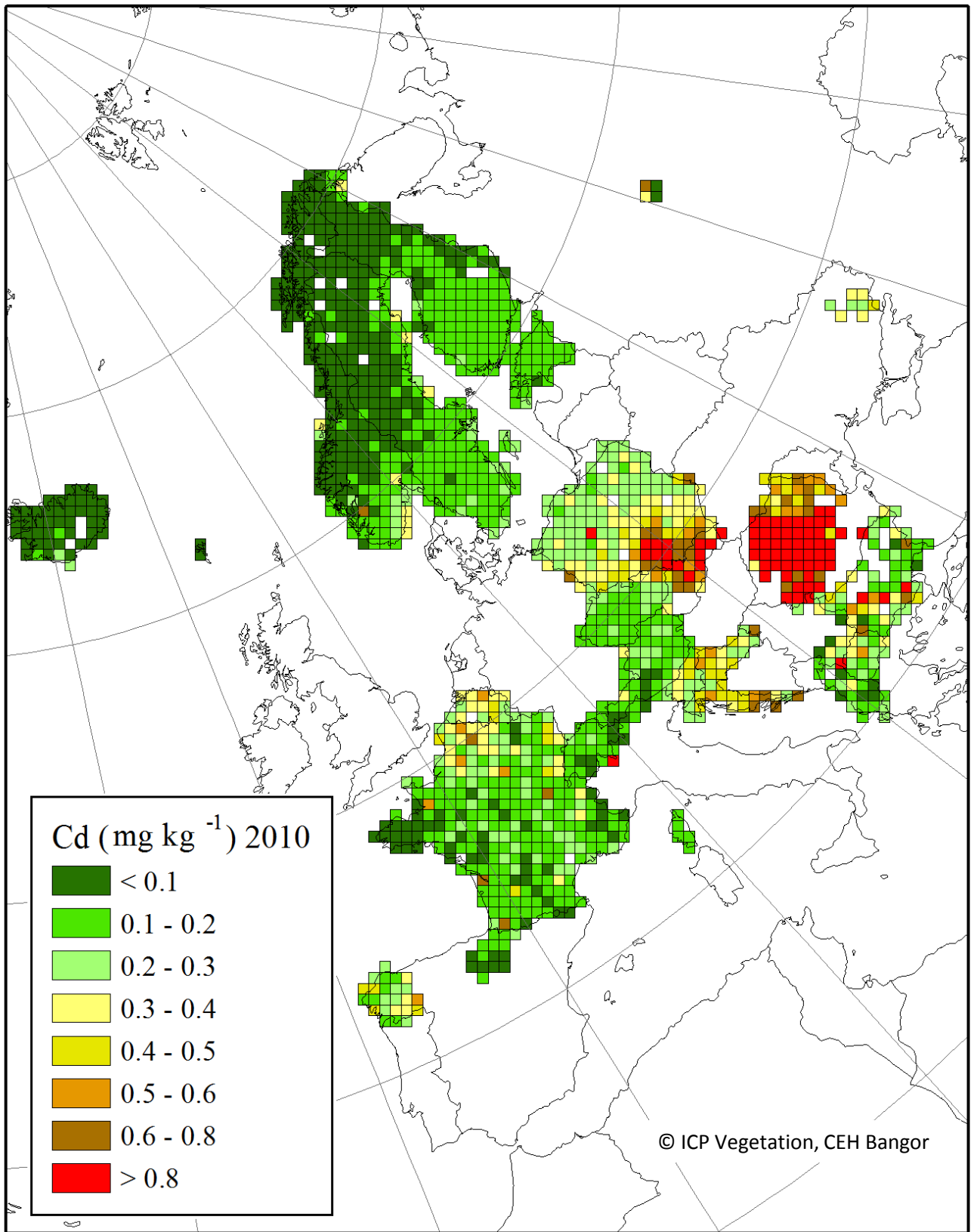
# Aluminium



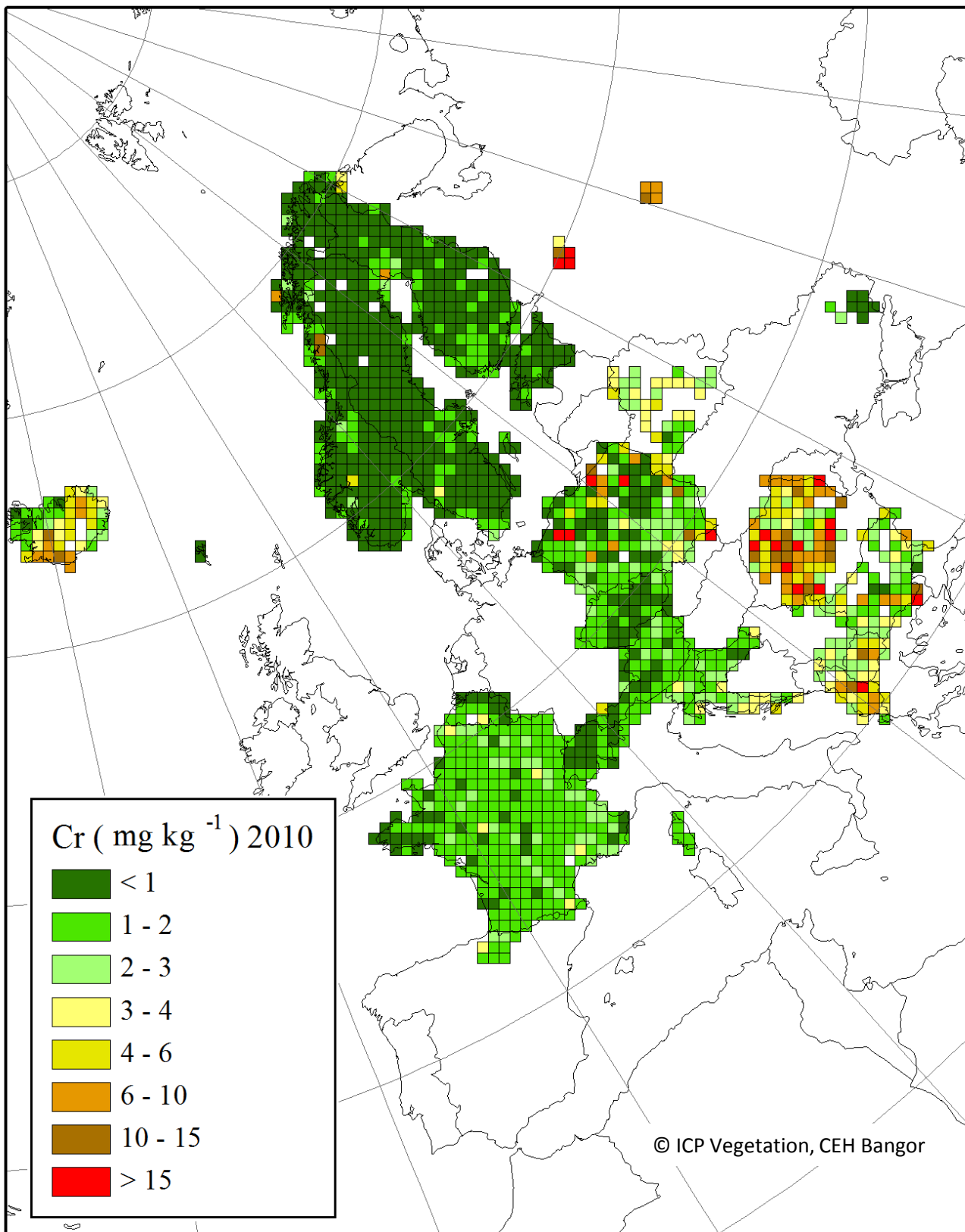
# Arsenic



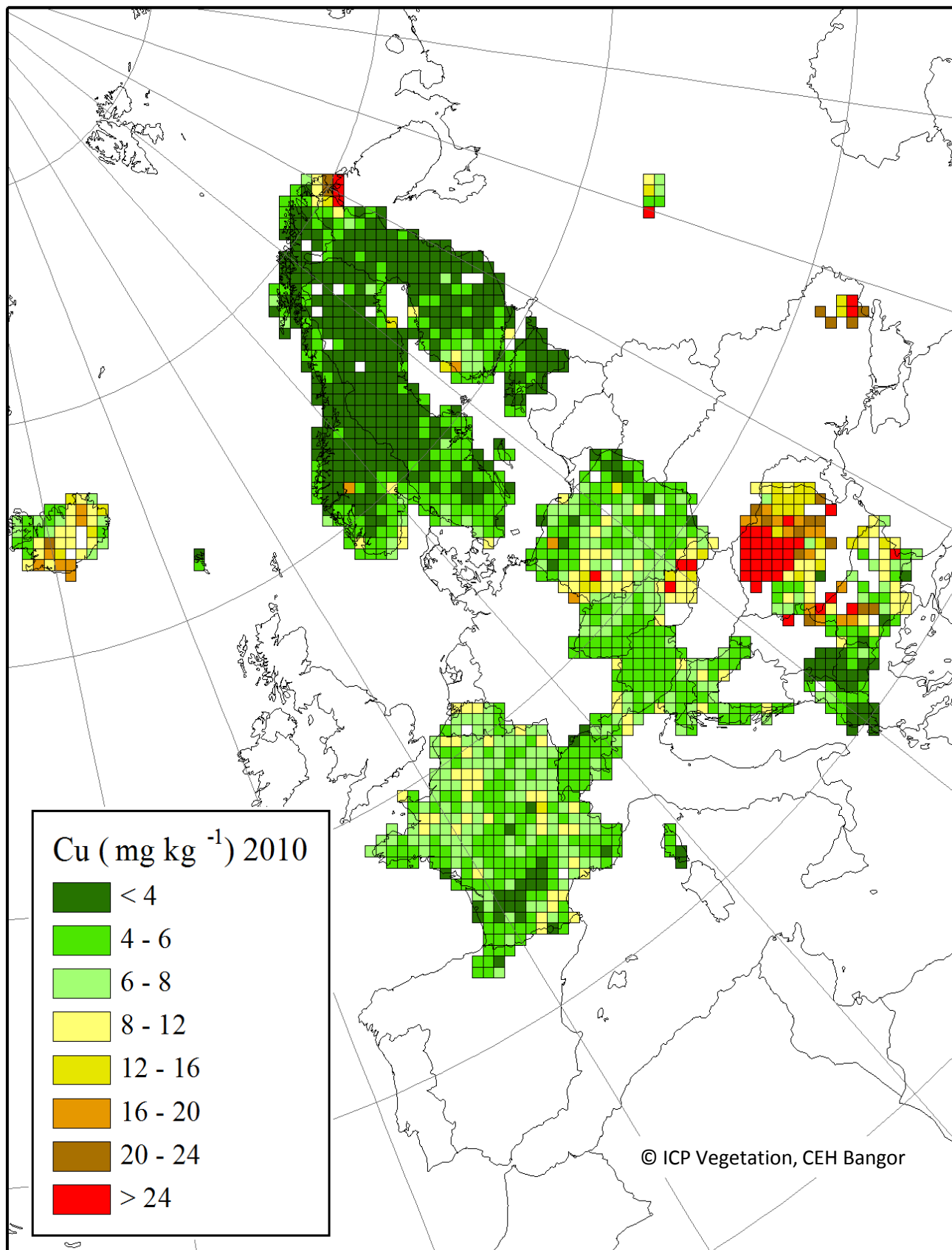
# Cadmium



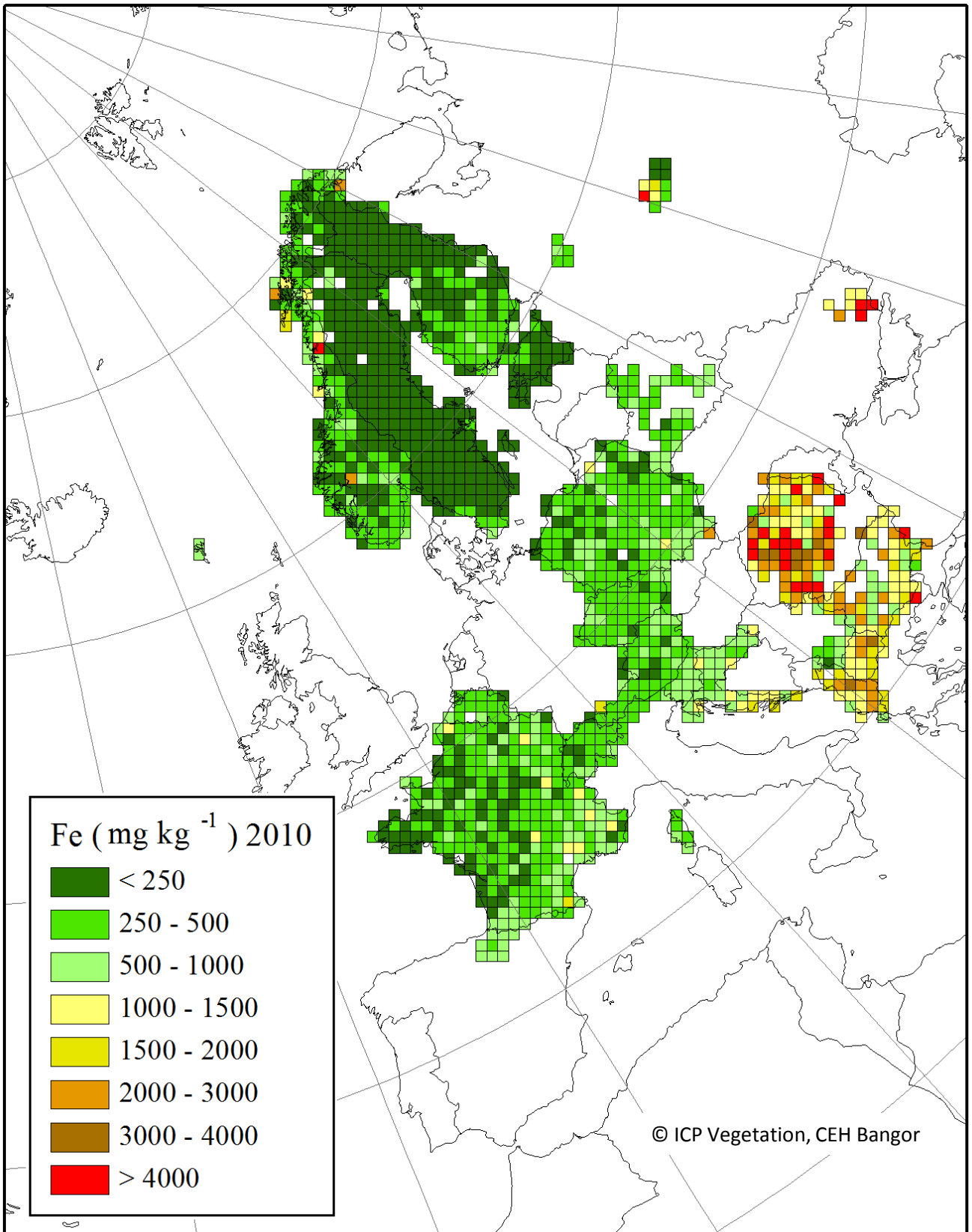
# Chromium



# Copper

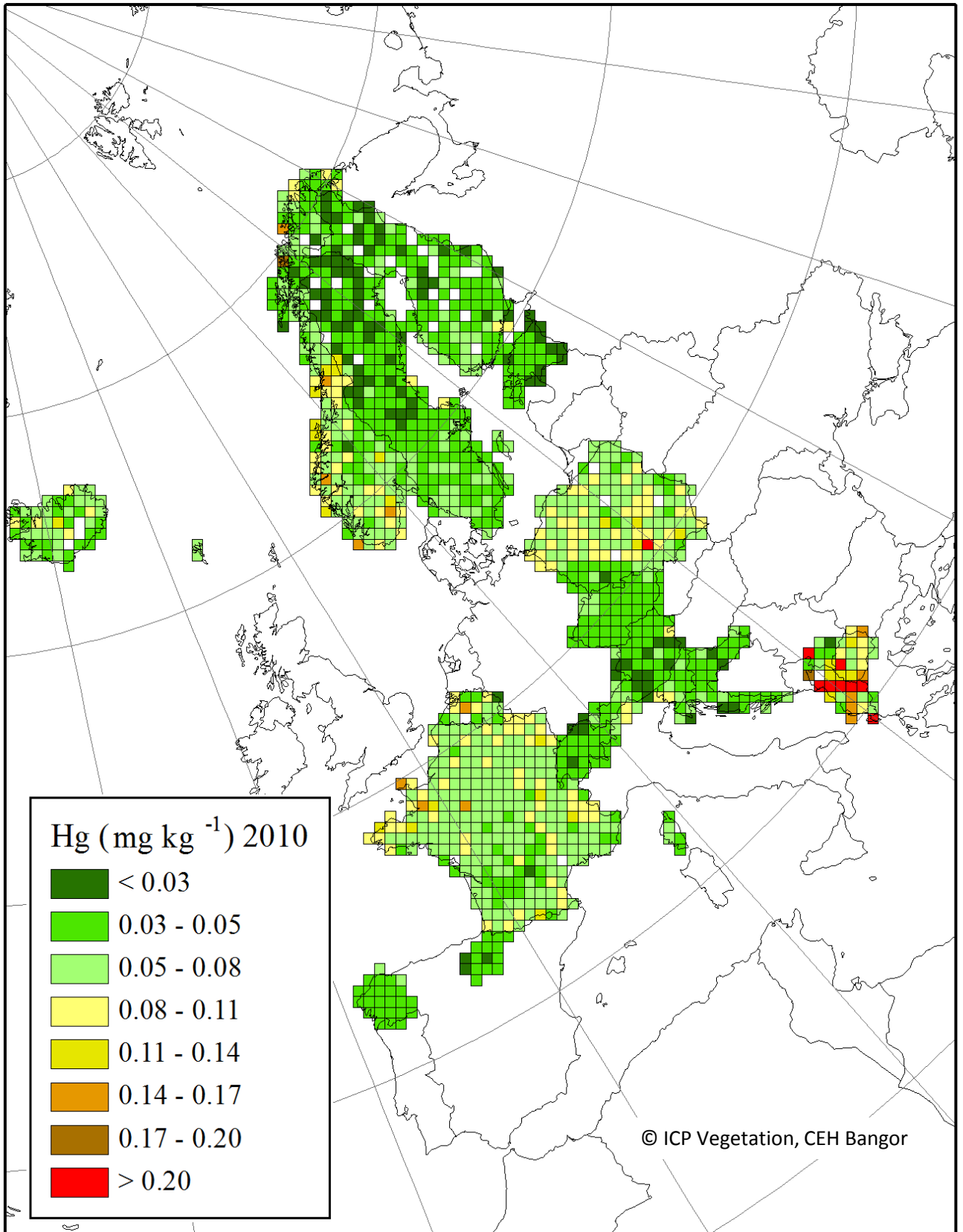


# Iron

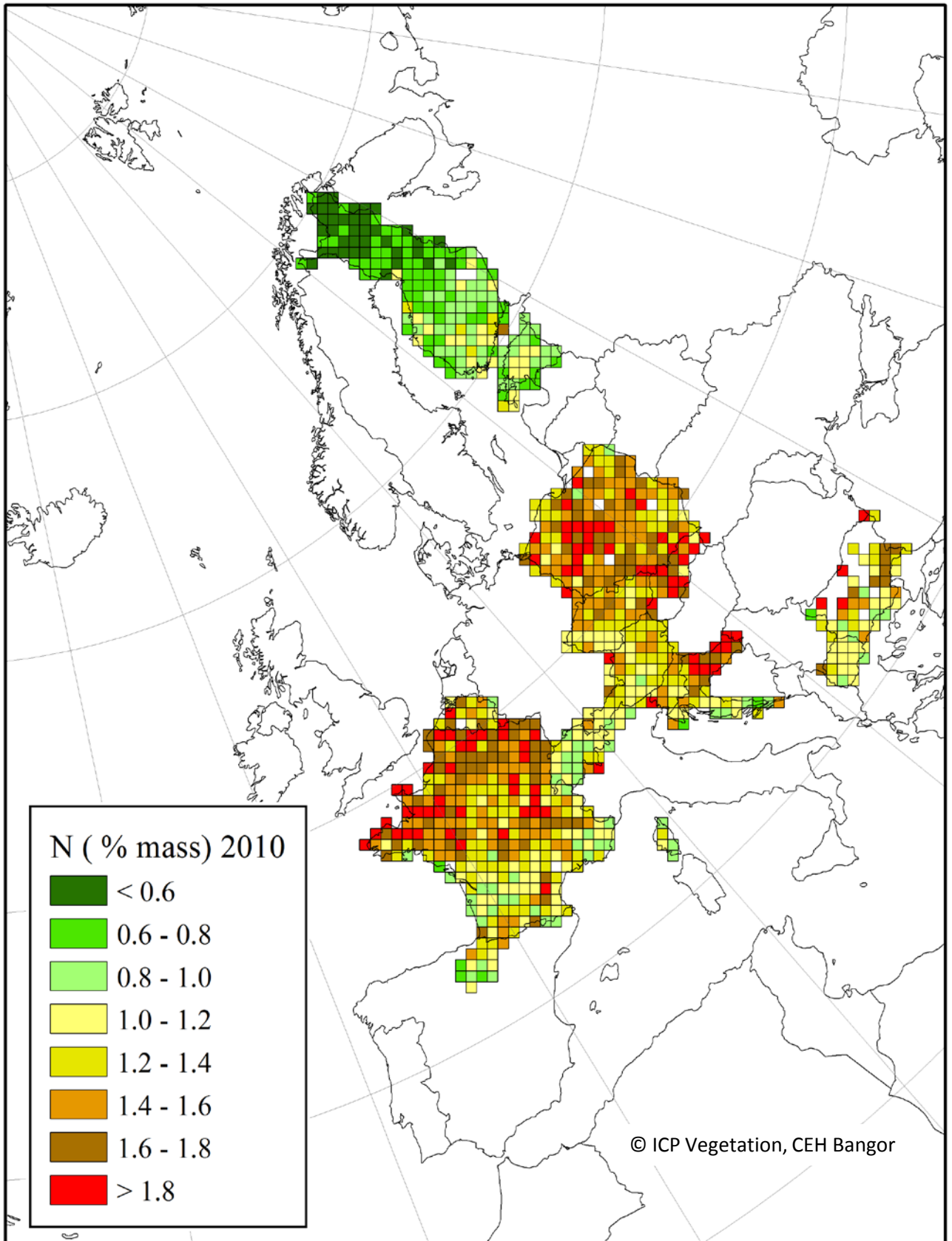




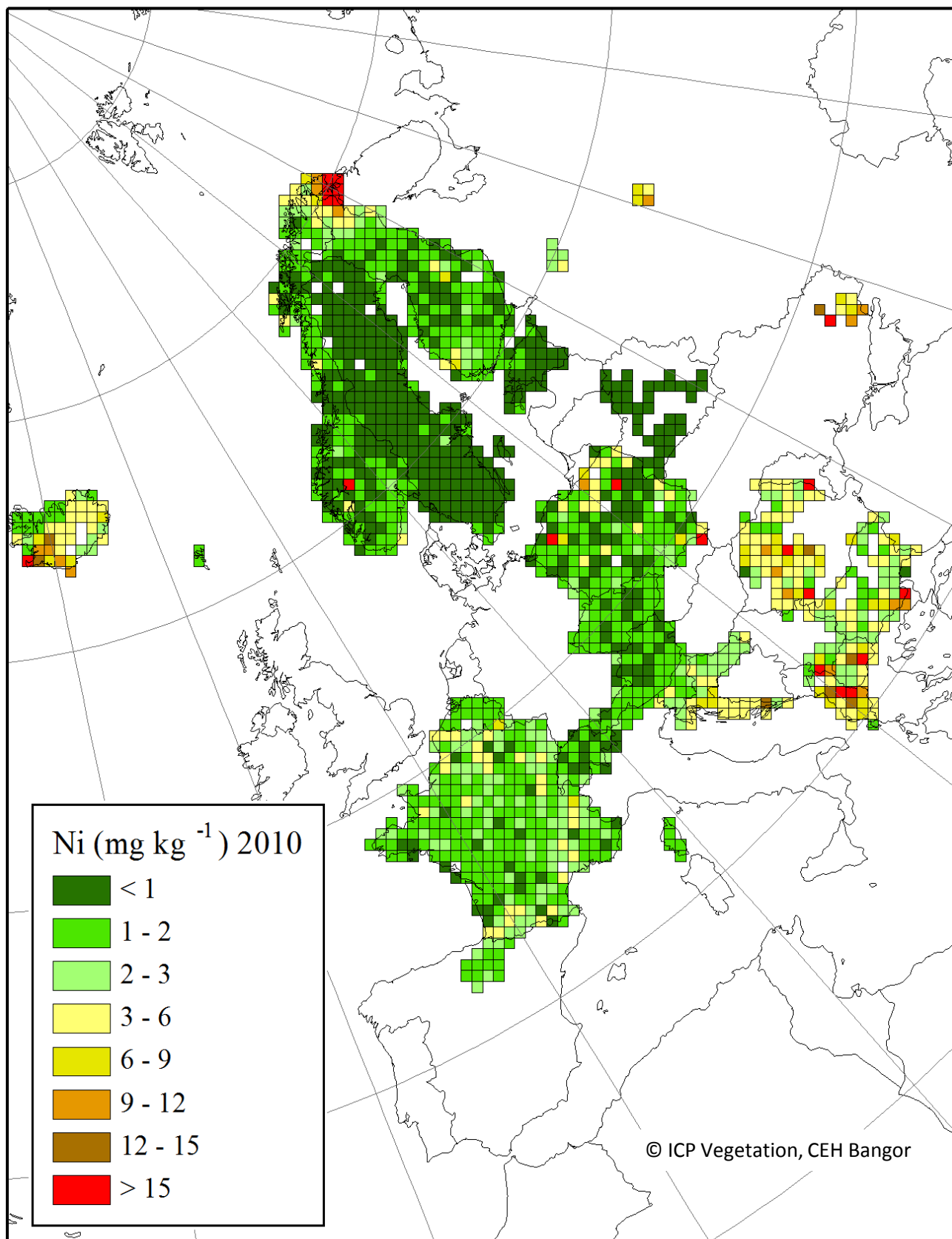
# Mercury



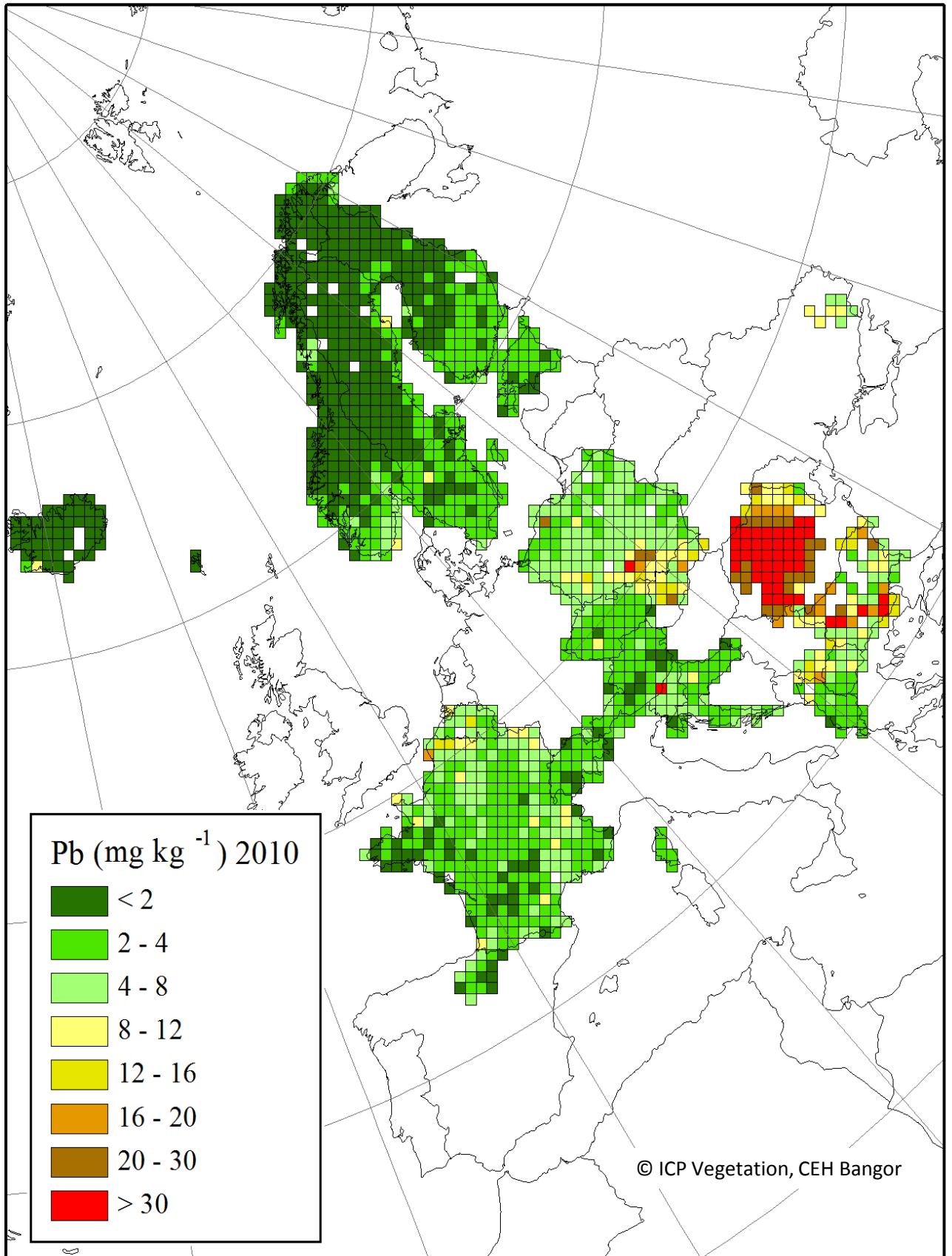
# Nitrogen



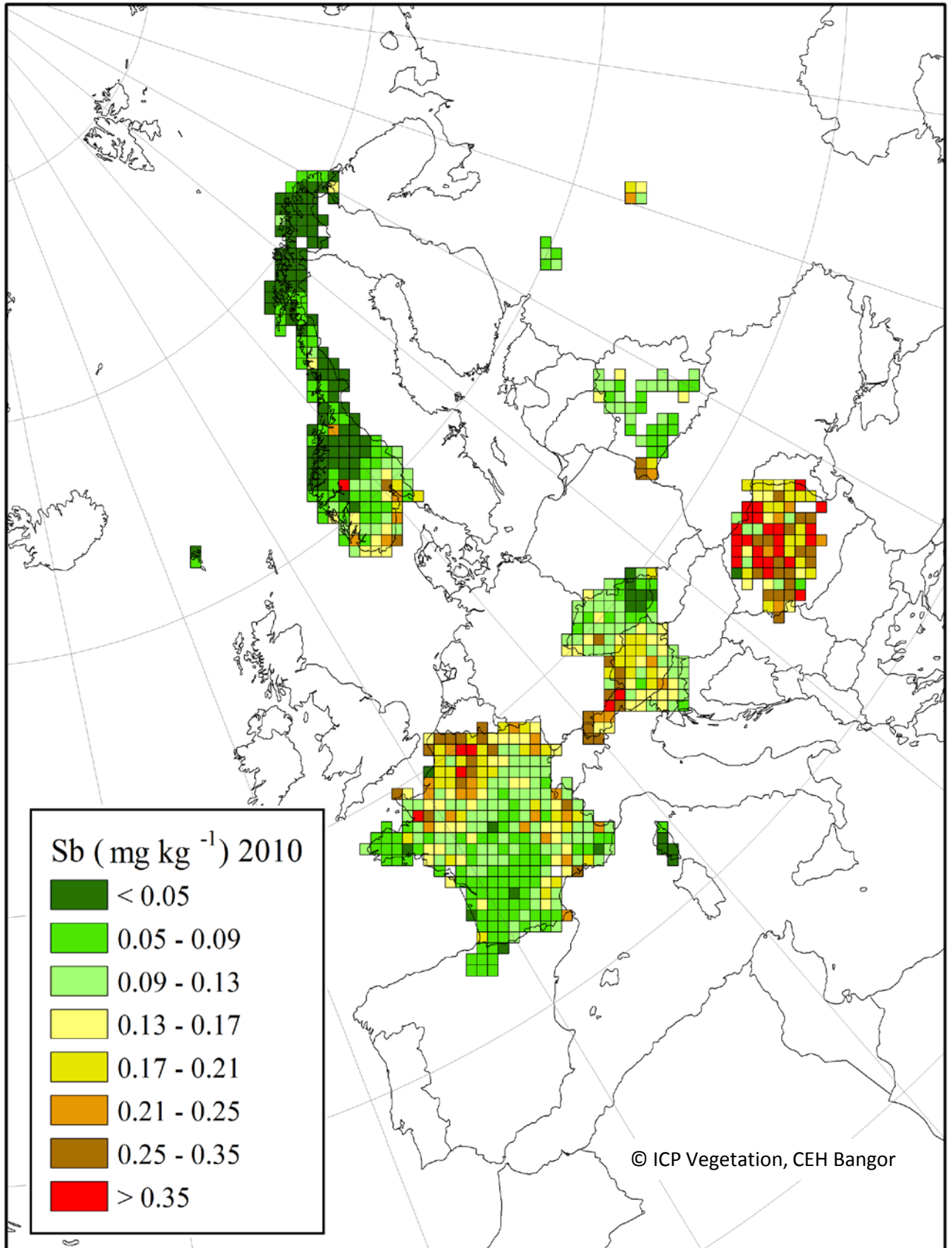
# Nickel



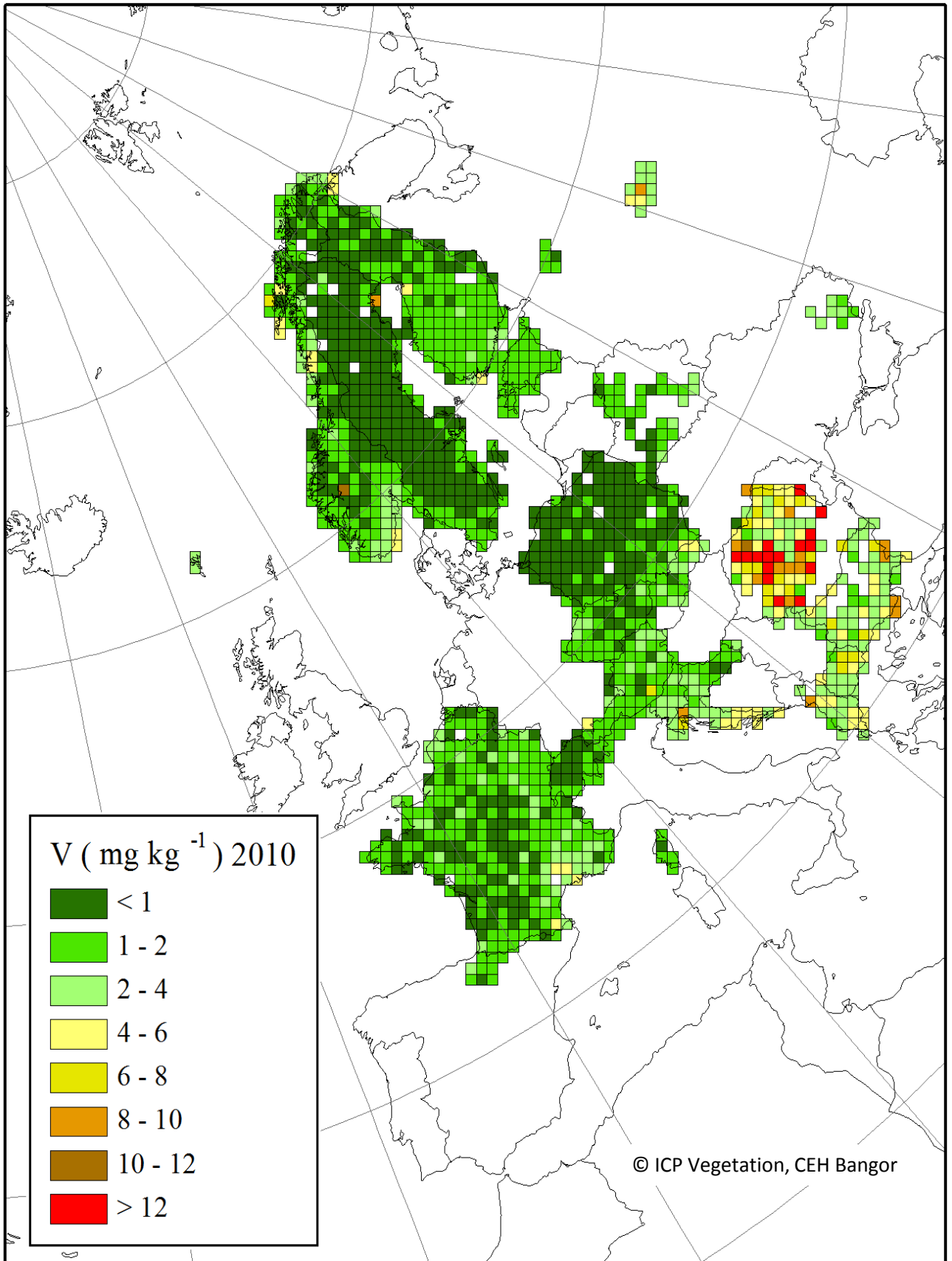
# Lead



# Antimony



# Vanadium



# Zinc

